

# WANBOROUGH VILLAGE & COUNTRY SHOW 2026

Saturday 22nd August 2026

12 noon to 6pm

Church Meadow, Upper Wanborough



Entry Fee - Adults £8.50 / Concessions £5 / Children £4 / Children under 5 FREE / Parking £2  
Family Ticket £25 (2 adults & 2 children)

Purchase tickets on the day / Cash & Card payments accepted on the gates



**WANBOROUGH  
SHOW SOCIETY**

*"For Community & Local Heritage"*

[www.wanboroughshow.org](http://www.wanboroughshow.org)

*A great family day out*

Est.1986



# Chappells

ESTATE AGENTS

Sales, Lettings & Property Management

**village specialists**  
**for over 4 decades**

Celebrate with us our  
**40<sup>th</sup> anniversary!**

Property experts with the experience others envy



[sales@chappells.uk.com](mailto:sales@chappells.uk.com)



[lettings@chappells.uk.com](mailto:lettings@chappells.uk.com)



01793 618080 35-36 Newport St, Old Town, Swindon SN1 3DP

# Our Chairman's Annual Address

## Chairmans Annual Address

Still here for the 5<sup>th</sup> year, good news, is that we have a great team putting together what we hope will be an enjoyable show for all. 3 Free events for the Children, including the ever-popular Climbing Wall. Sad news, Ken Fry after 35 years decided last year would be his last running the dog show, we will all miss him. The good news is that Alison Abbot of Abbey Dog Training has volunteered to host and sponsor this year's dog show, so we look forward to some interesting changes.

Thankfully Barry Hillier is back and running the entertainments side of our event, and has many great acts lined up for this year, (AND LOOKING AT NEXT YEAR TOO). All details can be found further on in the programme. Unfortunately, costs have risen (as with everything) and we have found it necessary for the first time since lockdown to raise the entrance fee. We still consider it to be reasonable and hope you do and continue to support the Show.

We still continue to have great support and sponsorship from the local businesses to help cover the costs of Loos, Marquees, Insurance without which we couldn't even think about continuing. Where we can, we share profit by donation to local groups and charities. Last year, we donated to local groups i.e. Wanborough Scouts, Swindon Scouts (who provide a number of scouts to help run the parking) the PTA, Church and others. Just over £1,000.

Hopefully you enjoy having a look around the Trade Stands. The Charity Stands have a reduced rate, and 1/3 of our stands are from Charities raising funds, we never know how much they raise, but some are repeat visitors, so we can only assume its worth them attending.

Looking forward to seeing you all on the day at Church Meadow, enjoying the Vehicle Display, Horticultural Tent please remember it's fun to enter (free entry for all classes), there are many varied classes. The Children's sections entrant numbers were up on last year, and hopefully will be again. So much effort goes into the setting up of the Green tent it would be a shame for it to run out of support. So don't forget to look at the classes, get your entry forms to me on Thursday 20<sup>th</sup> August by 10pm for the Adult section (see pages 12 to 19) and Beth Hoyer for the Children's (see pages 28 to 31)

I will be found in the Horticultural Tent most of the day, and at the bar at the end along with the rest of the team enjoying the auction of produce.

Sue Ripley Chair, 2022 to 2026



# Front Cover Competition

We, on the Wanborough Show Committee, are very proud to offer the annual cover competition out to the children of Wanborough Primary school.

The committee decide on a topic for the cover competition; this year was “The Classic Car Show”. We ask the children to design a beautiful and eye-catching front cover for our programme and they never disappoint.

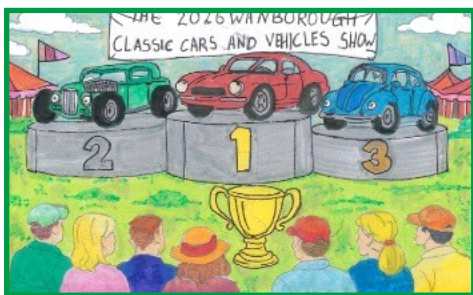
We receive a great quantity of stunning designs which the committee blindly judge (all names and ages are on the back of designs). We are thrilled to notice that budding artists bloom through the years and often progress from runner-up to year group winner and sometimes even win the grand prize.

The runner-up entries are put onto a beautiful Thank You card which goes to the judges of our competition classes and categories and our wonderful Raffle Sponsors. The year group winners are featured on the inside of the show programme. And of course, the overall winner gets pride of place on the front cover.

The children are celebrated in an in-school assembly where they receive certificates and a prize mug with the featured design for the overall winner.

We are very grateful to Wanborough Primary School for their continued support and the children’s beautiful work in keeping our wonderful village show alive. Thank you.

## Overall Winner



Valeriia Shcherbak

## Best in the year



Reception - Poppy Kent



**WANBOROUGH  
SHOW SOCIETY**



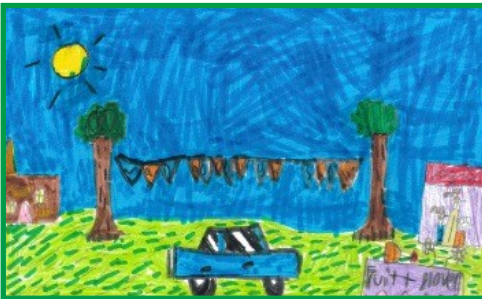
# Best in the year - Continued



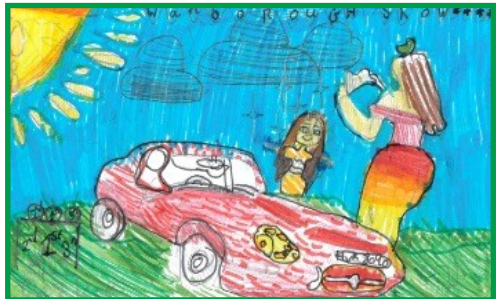
Year 1 - Sonny McHugh



Year 2 - Louis Francis



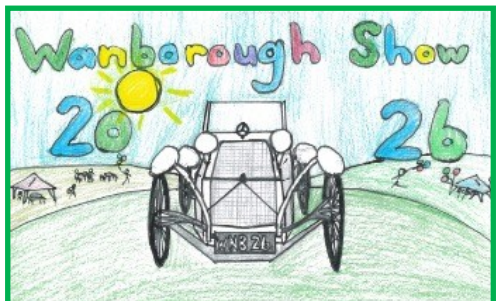
Year 3 - Bea Wills



Year 4 - Florence Neave



Year 5 - Poppy Speake



Year 6 - Kupa Kujeke



**7 High Street  
Chiseldon  
SN4 0NQ**

**The Hair Care & Trichology Clinic**

The Hair Care and Trichology Clinic is a well established, friendly salon with a diverse range of clients. Also providing a wig service to NHS and private patients in Swindon and Bath. We also offer an in house Award winning Trichology Clinic with 26 years of supporting those suffering with hair loss and scale conditions.

**cameo-hair.co.uk**

**hairandtrichology.co.uk**

**07481866192**

**Boutique Rose Nails by Bella Rose**

Currently working from Cameo, please contact me for availability.

Gel Polish £20, Gel Extension £40, Builder Gel £30

Phone: 07866077250 Insta: Boutique\_Rose\_Nails

Email: Bella.rose23905@gmail.com

**My Mochi Hair**

Hi I'm Alicia and I am renting a chair at Cameo Hair Salon! I am looking to take on new clients at the moment, especially vivid and creative colours. I love to work with everyone of any gender, race, religion, sexuality or disability. Please message or call me to book in.

Insta: @my.mochi.hair777 Facebook: AliciaJles Phone:

07555652356

Email: mymochi.hair@gmail.com

**Vacancies**

Always looking for other complementary / alternative therapies to join us with room rental available.

Please contact us via email if you wish to consider joining us.  
Lynda@hairandtrichology.co.uk

Alicia and Bella are offering a Pamper Package for anyone who books in on the same day for hair and nails. You are entitled to 10% off both services. Please contact either Bella or Alicia to book.



Adults **£8.50** / Concessions **£5** / Children **£4** / Children under 5 **FREE**

Parking **£2** / Family Ticket **£25** (2 adults & 2 children)

Purchase tickets on the day / Cash & Card payments accepted

**Join us for a fun family day out**



**WANBOROUGH  
SHOW SOCIETY**



# Contents Page

With thanks to all our sponsors

	Page
Flower & Produce Show Rules	8
Flower & Produce Exhibitors Notes	9
Flower & Produce Special Awards	11
Flower & Produce Classes	12-19
Flower & Produce entry form	21
Public Notices	23
Main Arena Schedule	25
Showground map	26-27
Children's Classes	28-31
Children's entry form	33
Main Arena events	34-37
Show Day Entertainment	38-41
Classic Vehicle Display	42-43
Trade Stands	44-45
Wanborough Show Raffle	46-47
Family Fun Dog Show	48-49



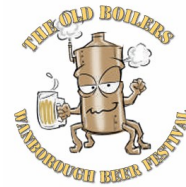
Main arena sponsor



Climbing Wall



Raffle



Wood Carver



Dog Show



Football Darts



Vehicle Display



**WANBOROUGH  
SHOW SOCIETY**

*"For Community & Local Heritage"*  
[www.wanboroughshow.org](http://www.wanboroughshow.org)

# Flower & Produce Show Rules

1. The Judges decision shall be final
2. Only one named exhibitor per entry
3. One entry only per person per class
4. All classes are open to all but “Special Awards” are restricted to residents within the parishes of Wanborough, Hinton Parva, Liddington and Bishopstone (with the exception of a special award for the highest points for a non-resident).
5. The Exhibitor must have grown the produce, with the exception of the Floral Art Classes.
6. **Entry will close at 10pm on Thursday 20th August 2026. No entries will be taken after that time.**
7. All exhibits to be staged between 8.30am and 10.30am on show day, after which time the marquee will be closed for judging until 2pm.
8. Entries into Flower and Produce tent will be FREE this year.
9. The Show Society shall not be responsible for loss or damage to exhibits, vases or containers.
10. Any protest should be made to the Flower and Produce Secretary before 2.30pm.
11. No prize money

Unless otherwise stated in the schedule, the rules contained in the Horticultural Show Handbook 2016 shall apply.

Presentation of Main Awards will be at the “Flower & Produce Tent” at 4.15pm, please would prize winners be available at this time. Exhibits to be collected from 5pm, please leave them for everyone to view until 5pm.

Exhibits remaining at 5.30pm will be auctioned in the Beer Tent. The committee extends its grateful thanks to those exhibitors who leave their produce for the auction.



# Exhibitors' Notes

## 3 Easy Steps On How to Enter

### 1. Plan

Study the programme schedule of classes and decide which classes you would like to enter.

Complete the Entry Form on page 21.

### 2. Enter

Send, drop off, or email the entry form to the addresses on the form before the closing date on 20th August 2026

### 3. Stage

Bring along your exhibit(s) to the marquee between 8.30am and 10.30am on Show Day (22nd August), allowing yourself time to stage your produce or exhibit(s).

On arrival at the marquee register your name with the "Meet and Greet" Team who will give you your entry number to display on your exhibit(s).

Stewards will be on hand to help and give you advice if needed.

Return later, to enjoy the Show which opens at 12 noon, once judging is complete the Flower & Produce tent will open for you to see whether you have a prize card beside your exhibit(s).

Please leave your exhibit(s) on display in the tent until 5pm so that everyone at the show can enjoy viewing them. You can then collect your produce & exhibit(s) from 5pm.

Any produce & exhibits remaining at 5.30pm will be entered into the Produce Auction in the Beer Tent.

#### **Post entry forms to:-**

Sue Ripley—1 Palmers Way, Wanborough SN4 0BE

**E-mail entries:-** [sueripley58@hotmail.com](mailto:sueripley58@hotmail.com) (no entry fees to pay)

**Entry Form on page 21**

**FREE ENTRY**



**WANBOROUGH  
SHOW SOCIETY**



**PRIMARY**

HOMES & LETTINGS

*Dreaming of life*

**IN WANBOROUGH?**

Whether you're buying your forever home or renting your next adventure, **PRIMARY** has you covered.

We know all the **hidden gems**, the **best streets**, and the **homes you won't want to miss**:

🏠 **Buy smart** 🏠 **Rent easy** 🏠 **Love where you live**

**Sell your Home**

*for just* **1%**



**Let your Property**

*for just* **10%**

*Wanborough is calling...  
so let's get a move on!*

Contact us today to  
arrange a **FREE** valuation

**01793 641 641**

info@primaryhomesandlettings.co.uk | primaryhomesandlettings.co.uk

101 Commercial Road, Swindon, Wiltshire, SN1 5PL



# Flower & Produce Show Special Awards



## Award

**Loveday & Loveday Perpetual Challenge Cup**

**Jack Newson Perpetual Challenge Cup**

**Greatfield Nurseries Cup**

**N. J. Dowden Perpetual Challenge Plate**

**Wanborough Herb Nursery Perpetual Challenge Cup**

**Ashley Roberts Perpetual Challenge Cup**

**F. R. Payne Memorial Cup**

**C. J. Hymers Perpetual Challenge Cup**

**Roy Kent Memorial Challenge Cup**

**Jean Kent Plate**

**J.R. Bell Perpetual Challenge Cup**

**Trish Emms Perpetual Challenge Plate**

**St Andrews Flower Club Trophy**

**Wanborough Show Cookery Challenge Shield**

**Church Meadow Perpetual Challenge Cup**

**Wanborough Cake Challenge Trophy**

**Jubilee Perpetual Challenge Trophy**

## Criteria for the award

Highest Points in Sections A, B & C

Second Highest in Sections A, B & C

Best exhibit in sections A, B & C

Best Vegetable in Show

Best Herb Collection in Show

Best Flower in Show

Best Roses or Sweet Peas

Best Dahlia Exhibit

Highest points in Section C

Best Vase of Perennial Flowers

Best Exhibit from New Exhibitor

Best Exhibit in Cookery

Best Exhibit in Floral Art

Highest Points in Cookery

Second Highest Points in Cookery

Best Fruit Cake in Cookery

Best Exhibit in Arts & Crafts - Classes 86 to 98



**WANBOROUGH  
SHOW SOCIETY**



# Section A - Vegetables

Judges of section: Jane & Matthew

NB: Please note ONE entry per person per class

Class	Quantities
1. Runner Beans	5
2. Longest Runner Bean	1
3. Curliest Bean	1
4. Basket or Trug of mixed Vegetables	Any number or variety
5. Beet (Round)	3
6. Radishes	5
7. Carrots (Long or Intermediate—Tops removed to approx. 7cm)	3
8. Courgettes	3
9. Cucumbers (Frame or Ridge)	2
10. French Beans	5
11. Garlic	2
12. Onions (Tops removed, max 250g each)	4
13. Onions (Tops removed over 250g each)	3
14. Shallots (Giant)	6
15. Shallots (Pickling)	6
16. Spring Onions	5
17. Peppers (Chilli)	3
18. Peppers (Sweet)	2
19. Potatoes (Coloured)	5
20. Potatoes (White)	5
21. Heaviest Potato	1
22. Squash / Pumpkin	1
23. Sweetcorn	2
24. Tomatoes	6
25. Tomatoes (Cherry or Patio)	6
26. Any Other Vegetable not mentioned above	3

Class		Quantities
27.	Heaviest Marrow	1
28.	Collection of Herbs	5
29.	Rhubarb	3

#### Hints and Tips for Vegetable showing

- Harvest your entries as close to show day as possible for maximum freshness, except for garlic, onions or shallots; alliums need time for the skins to dry. Cucumbers do gain extra points if the flower is still attached.
- There's lots of advice online about "staging", or presenting your vegetables, but don't forget that we use the RHS Horticultural Show Handbook. Check with Sue Ripley if you don't have a copy

## Section B - Fruit

Judges of section: Jane & Matthew

Class		Quantities
30.	Apples (Cooking)	6
31.	Apples (Dessert)	6
32.	Soft Fruit	Approx. 250g
33.	Any other Fruit	Dish of any kind staged for effect

#### Hints and Tips for Fruit showing

- Do not remove the bloom, and don't polish fruit for exhibition.
- Ideally display fruit with stalks still attached

#### Post entry forms to:-

Sue Ripley—1 Palmers Way, Wanborough SN4 0BE

**E-mail entries:-** [sueripley58@hotmail.com](mailto:sueripley58@hotmail.com) (no entry fees to pay)

**Entry form on page 21**

**FREE ENTRY**

# Section C - Flowers

Judges of section: Peter Biggs

Class	No. of Stems
34. Annuals, "Jewel of the garden", bright and beautiful colours. Grown from seed within the last 12 months	3 cultivars, 1 vase of 9 stems
35. Marigolds, African	6 blooms
36. Marigolds, French	6 blooms
37. Dahlias (Cactus / semi cactus)	1 cultivator, 3 blooms
38. Dahlias (Pom-pom) (Max. size 8cm)	1 cultivator, 3 blooms
39. Dahlias, any other	1 cultivator, 3 blooms
40. Dahlias Small - Dahlias Pom Pom, (Max size 5cm)	1 cultivator, 3 blooms
41. Hydrangea (may have 2 blooms per stem)	3 stems
42. Agapanthus	3
43. Hardy Herbaceous Perennials in bloom	3 cultivators, 1 vase of 9 stems
44. Phlox	1 cultivator, 3 blooms
45. Alstroemeria	3 stems
46. Rose Hybrid T	1 bloom
47. Roses, any cluster flower type	3 stems from 1 cultivator
48. Miniature Rose	1 cultivator, 3 blooms
49. Best flower in the garden this morning	1
50. Sweet Peas	8

## Hints and Tips from the judge for showing Flowers

- Please read the schedule carefully, and display the correct number of stems/blooms
- Generally, a "Herbaceous Perennial" flowers every year, has fresh green stems, which die back to ground level in the winter. A shrub grows every year, but has woody stems which don't die back.
- An Annual is a plant that grows from seed for a single year.



**WANBOROUGH  
SHOW SOCIETY**



# Section C - Pot Plants

Class		Quantities
51.	Cacti or Succulent (Max. pot size 26cm)	1
52.	Foliage Pot Plant	1
53.	Fuchsia - Single or double (Max. pot size 26cm)	1
54.	Geranium or Pelargonium - Any cultivar (Max. pot size 26cm)	1
55.	Flowering Pot Plant	1

# Section C - Pot Plants

Judge: Mr Steve Ramsay

## Class

- 56. Hanging Basket or Planter (the container should not be bigger than 75cms square or diameter), or Window Box (not more than 2 metres long), holding a minimum of 3 cultivators or species of plant. This will be judged in situ on Thursday 20th. No need to bring up to the show ground.
- 57. Tallest Sunflower. Grow a giant sunflower from seed and we will come and measure it on Thursday 20th August before the show.



# Section D - Floral Art

Judge: Jean Nash

## Class

58. Little Treasure in Container of your choice - Max - 10cm High x 10cm Deep x 10cm Wide
59. Foliage and Berries - Max - 50cm High 40cm Deep 50cm Wide
60. Celebrate Commonwealth Games - An exhibit to depict a participating country - Max - 50cm High 40cm Deep 50cm Wide
61. A modern vertical exhibit with the colour RED to predominate - Max Height Optional 30cm Deep 30cm Wide.
62. Glass Container No Floral Foam - Max Height Optional 30cm Deep 30cm Wide
63. Mother of the Bride Corsage - Max Length 12cm long x 8cm wide

## Hints and Tips from the Floral Art judge

- An “exhibit” is composed of natural plant material with or without accessories, contained within a space as specified in the show schedule.
- Backgrounds, bases, containers, drapes, exhibit titles and mechanics may always be included in an exhibit unless otherwise stated.
- More than one placement may always be included unless otherwise stated.
- In all exhibits natural plant material must predominate.
- Artificial plant material, including artificial fruit is not allowed.
- Natural plant material is either growing fresh, dried or preserved, i.e flowers and foliage.
- Flowers do not need to have been grown by the exhibitor.
- Take care to ensure display is within the dimensions stated.

### Post entry forms to:-

Sue Ripley—1 Palmers Way, Wanborough SN4 0BE

**E-mail entries:-** [sueripley58@hotmail.com](mailto:sueripley58@hotmail.com) (no entry fees to pay)



# Section E - Cookery

Judges of section: Savoury & Sweet Dishes: Toby Ridler. Jam & Marmalade: Jenny Yallop.

Wines, Beers & Liqueurs: Dave Lockwood

<b>Class</b>	<b>Quantities</b>
64. Bread - Specialist Loaf or Rolls	1 or 6
65. Sausage Rolls (meat or plant based)	6
66. Quiche - no larger than 24cm	1
67. Fruit Scones	6
68. Scotch Egg	2
69. Chutney or Piccalilli	1 jar
70. Pickled or preserved vegetables or fruit	1 jar
71. Jam or Jelly (made in last 12 months)	1 jar
72. Citrus Curd	1 jar
73. Marmalade (any citrus, made in last 12 months)	1 jar
74. Honey	1 jar
75. Home-made wine, cordial, beer, cider or perry	1 bottle
76. Fruit liqueurs	1 bottle
77. Pressed Fruit Juice	1 bottle
78. Fruit Cake - no larger than 23cm diameter (see Special Awards)	1
79. Victoria Sandwich - 3 egg mixture, jam only for filing	1
80. Fruit Pie (double crust), no larger than 23cm diameter	1
81. Shortbread Fingers	6
82. Pastel De Nata	6
83. Battenberg	1
84. Strawberry Polenta Cake (Recipe on page 18)	1
85. Lemon Drizzle Cake	1
86. Gluten Free Bakewell Tarts	6

## Hints and Tips from the Cookery judges

- Flavour, presentation, consistency and texture are the criteria used for judging
- It is really helpful to add a description label.
- We can't control the temperature in the Flower and Produce Tent. Please be aware of this when serving food which has been in the tent for some time. Be particularly wary of using fresh cream for decoration.

## Cookery Class 84 - Recipe

### Strawberry Polenta Cake

#### Ingredients

Serves 12

- 175g Polenta (Cornmeal)
- 75g Plain flour
- ½ teaspoon salt
- 1 teaspoon baking powder
- 175g unsalted butter
- 250g caster sugar
- 4 eggs
- 1 teaspoon vanilla extract
- 125ml low-fat natural yoghurt
- ½ punnet sliced fresh strawberries

#### Preparation method

**Prep: 15mins Cook: 45mins**

#### Method

1. Preheat oven to 180C/Gas 4. Grease and flour a 23cm round cake tin. Sift together the polenta, flour, salt and baking powder, set aside.
2. In a medium bowl, beat together the butter and sugar. Beat in the eggs, one at a time, then stir in the vanilla. Add the dry ingredients alternately with the yogurt, stirring after each addition. Finally, fold in the strawberries. Pour the cake mixture into the prepared cake tin.
3. Bake for 45 to 50 minutes in the preheated oven, until a skewer or a knife inserted in the centre comes out clean. Cool cake in the tin on a wire rack for 30 minutes then invert onto a serving plate. Serve with ice cream or cream, or eat just as it is.



# Luscious Lotmead Strawberries

Open daily 9.30 am - 5.00 pm  
From May to Christmas



#### **PYO**

Pick Your Own fruit,  
vegetables &  
Sunflowers all  
summer long.

#### **Farm Park**

Meet our friendly  
animals and enjoy  
the large outdoor  
play area.

#### **Cafe & Shop**

Teas, coffees and  
light snacks served  
during the picking  
season

**For more information:-**

**Visit our website [www.lotmead.co.uk](http://www.lotmead.co.uk)**

**Follow us on Facebook and Instagram @lotmeadfarm  
or call us on 01793 790137 (24hrs)**

# Section F - Arts & Crafts

Judges of section: Sue Dent

Judge of Photography - Barbara Lockwood

## Class

87. Art, any drawing or painting (oils, water, pastels, sketching crayons)
88. Art, a 3D work (ceramics, sculpture, woodcarving)
89. Needlework (e.g. cross stitch, tapestry, embroidery, patchwork, quilting, appliqué)
90. Mosaics
91. Any crocheted or knitted item (jumper, hat, scarf, post box topper)
92. Macrame
93. Pottery
94. A handmade sewn garment for child or adult
95. Handmade Humerous Birthday Card
96. Photo: Pastel - Max size 30 x 30cm
97. Photography: Humorous (with caption) - Max size 30 x 30cm
98. Photography: Woodland Scene– Max size 30 x 30cm
99. Photography: A Silhouette - Max size 30 x 30cm

## Hints and Tips from the Arts & Craft judges

- Please add an explanation card to help the judge understand the skill involved and whether a kit has or has not been used.
- Ensure you cover any signatures on artwork or any other exhibits.
- Please let Sue Ripley know if you have a large piece of artwork to exhibit so we can allow plenty of space in the tent,



# Barrett

## Accounting and Tax Services



SELF ASSESSMENT TAX  
RETURNS ● TAX ADVICE

COMPANY, SOLE TRADE AND  
PARTNERSHIP ACCOUNTS  
● BOOK-KEEPING

PAYE ● VAT

If you want service that gives value for money,  
whilst being professional and efficient,  
contact us on

01793 741250 or mail@barrett-ats.co.uk  
for a free initial discussion

*Pleased to be supporting  
The Wanborough Summer Show*



Monarch Roofing specialise in slating, traditional Cotswold stone and lead. We pride ourselves in offering a professional service on any size contract where personal attention, health and safety and quality of work are paramount.

**LEADWORK • COTSWOLD STONE ROOFING • SLATING & TILING**

**W:** [www.monarchroofing.co.uk](http://www.monarchroofing.co.uk) **T:** 01793 485623 **E:** [office@monarchroofing.co.uk](mailto:office@monarchroofing.co.uk)



# RESHAPING THE FUTURE

- Demolition
- Recycling
- Asbestos Removal
- Project Management
- Waste Management
- Refurbishment & Strip Out
- Enabling Works
- Earth Works



**lawson**  
GROUP  
[www.lawsongroup.co.uk](http://www.lawsongroup.co.uk)

Get in touch for further  
information or to request  
a quote for your project:  
[estimating@lawsongroup.co.uk](mailto:estimating@lawsongroup.co.uk)

Accredited with:



Swindon - 01793 782000 Bristol - 0117 287 0321  
Oxford - 01865 238378 London - 0203 633 5170

# Public Notices

## Photography

On the day we usually have several photographers and videographers capturing show memories. These images and videos may be used for marketing and promotional material for future shows. If you don't want your image to be used please let the photographer know on the day. If there are any images with children in we will try to obtain the parent's permission to use these images.

If you would like to share your photos please do, you can either send them to us at [Info@wanboroughshow.org](mailto:Info@wanboroughshow.org) or share them on our Facebook page.

## Vehicles (Display and General)

The show field is a busy place especially on show day. The show involves people, animals and vehicles of all types. We would like to remind people to take as much care as they would do on a busy road. In fact please take even more care!

This basic rule applies to drivers too of course. Please anticipate the unexpected and always keep to the speed limit which for all parts of the show fields, the entrances and exits is DEAD SLOW at all times!

- Please take as much care as you would do on a busy road
- Please anticipate the unexpected
- Please keep to the speed limit which is DEAD SLOW at all times!

Thank you for helping keep a safe environment

## Showground Safety

The commentary tent at the side of the Main Arena is the main point of contact for any emergencies, lost children and lost property.

Please be aware of moving vehicles at the entrances, in the car parks and especially when the Vehicle Parade enters the Main Arena.

Please follow any directions given by one of our stewards/marshals, who will be clearly identifiable in the Wanborough Show Society hi-viz vest.

Smoking is not permitted in any tent or marquee. Sand buckets are provided at each marquee entrance for safe disposal. If a fire is discovered raise the alarm and dial 999 (SN4 0DA)

First Aid is provided and can be found in a gazebo next to the Main Arena and Community Tent.

Dogs must be kept on a lead at all times.



**WANBOROUGH  
SHOW SOCIETY**



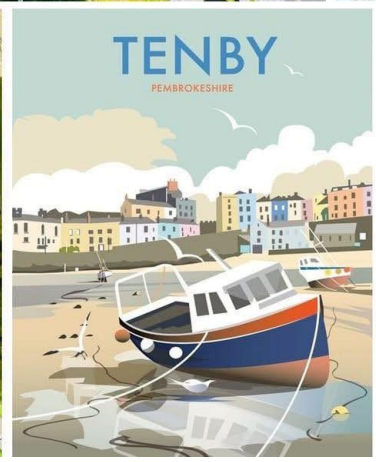
*Please keep dogs on  
a lead at all times*



Have the adventures of a lifetime when you

# HOLIDAY WITH US

01834 871952 | [info@countrypark.co.uk](mailto:info@countrypark.co.uk)



# Schedule of Events

Showground opens to the public at midday

## Main Arena Schedule

Time	Event
12.00	Pan Delight Steel Band
12.30	Historic Car Display
13.00	Paws for Thought—Dog display
14.00	The Mighty Smith Show
14.30	Morris Dancers
15.00	Black Eagles - Acrobatics
15.00	Razamatazz (corner of arena)
16.00	Motorcycles & Scooters
16.15	Black Eagles - Acrobatics
16.45	The Mighty Smith—Tug of War

## Other events

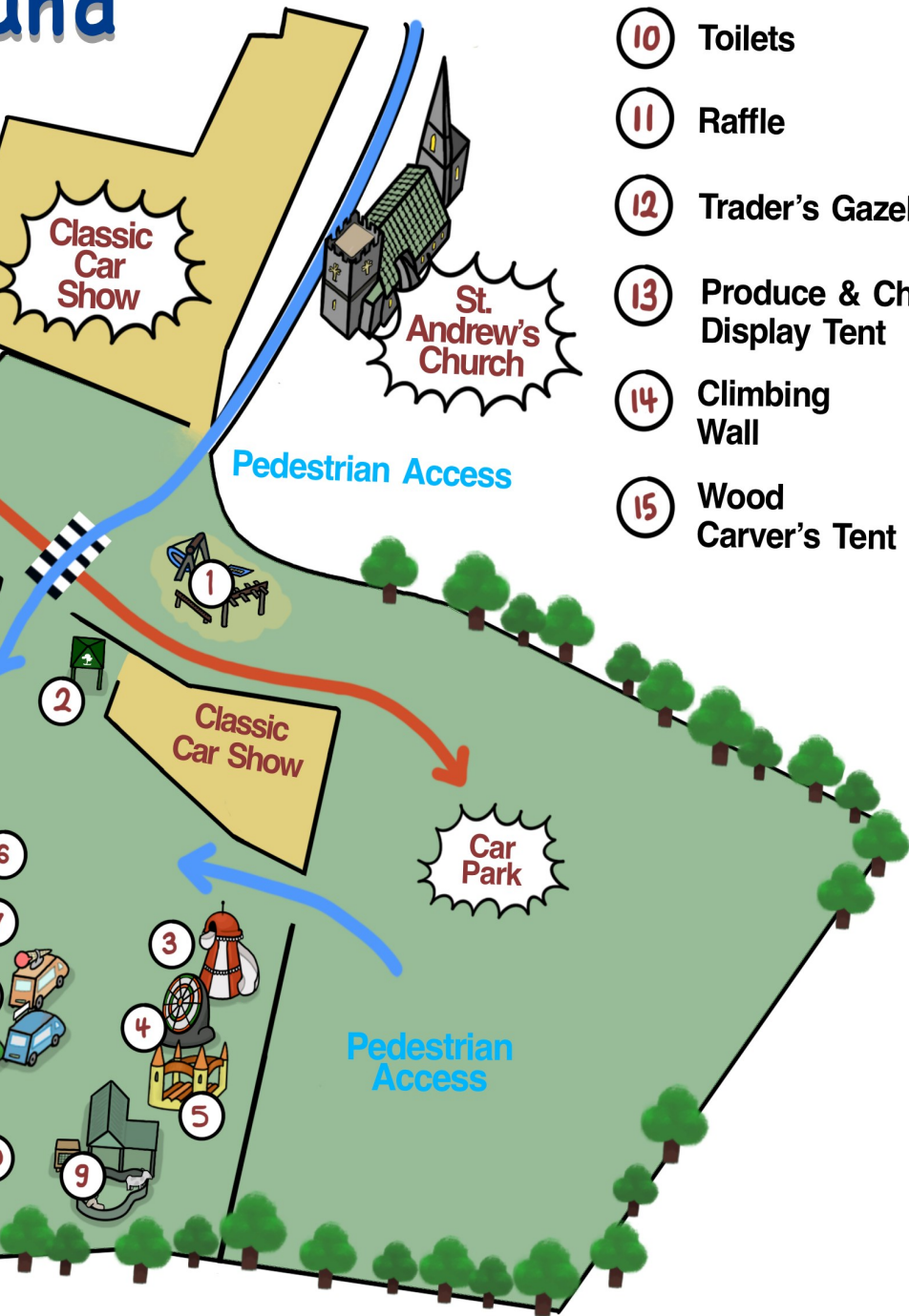
- 14.00** Flower & Produce and Children’s Tent will open for viewing once judging has been completed
- 16.15** In the Flower & Produce and Children’s Tent- Presentation of awards
- 17.00** Exhibits in the Flower & Produce and Children’s tent can be collected
- 17.30 - 18.00** Produce Auction - In the Beer Tent

# Showground Map

- 1 Play Area
- 2 Bonsai Tent
- 3 Helta Skelta
- 4 Football Darts
- 5 Bouncy Castle
- 6 Commentary Tent
- 7 First Aid
- 8 Food Outlets
- 9 Wildlife Display



und



- 10 Toilets
- 11 Raffle
- 12 Trader's Gazebos
- 13 Produce & Children's Display Tent
- 14 Climbing Wall
- 15 Wood Carver's Tent



# Children's Show

See page 33 for entry form

Children's Classes are all **FREE** to enter

**Prizes** - Certificates & Awards



# Children's Show Rules

## Rules:

1. Names to be attached or written on the REVERSE side of entry.
2. Age only to be indicated on the front/side of the exhibit.
3. Only one entry per child, per category please. Entries should be entirely the own work of the named exhibitor.
4. A child may enter any age category in their year group or higher. All children may enter the Under 18's categories. Children must not enter categories that are below their age/year group.
5. Please adhere to schedule rules in order to avoid the disappointment of disqualification.

## Awards:

### Perpetual Challenge Cups:

- Highest Points 0 years to reception
- Highest Points Key Stage 1
- Highest Points Early Key Stage 2
- Highest Points Late Key Stage 2
- Highest Points 11+
- Highest Points Under 18's
- Shield for Highest Points Overall
- The Janine Brown Award for Effort and Participation in the Wanborough Show

## Post entries to:

28 Warneage Green, Wanborough (B Hoye address)

## Enquiries:

Beth Hoye 07716344996

Email entries to: [bethanhoye@gmail.com](mailto:bethanhoye@gmail.com)



**WANBOROUGH  
SHOW SOCIETY**

*"For Community & Local Heritage"*  
[www.wanboroughshow.org](http://www.wanboroughshow.org)

# Children's Show

## Baby - Reception

1. **Paper Plate 'Under the Sea' Scene-** Use a paper plate as a base for an underwater scene. Use any medium you like to create your picture.
2. **Shape Dinosaur-** Make a dinosaur using your favourite shapes! From triangular spikes to an oval face. Your dinosaur could be angular or smooth and round. Use cut out shapes and experiment with colour and size.
3. **Design a Pirate Hat-** Use any materials to create and decorate a pirate hat.
4. **Smiley Face Biscuits-** decorate 3 biscuits (these can be shop bought) with different faces. Biscuits will be judged on look and not tasted.
5. **Fingerprint Flowers-** use your hands and fingers to create a beautiful picture of flowers. Don't forget background garden features

## Key Stage 1 - Years 1 & 2

6. **Pointillism Artwork Animal-** use spots and dots to create a stunning picture of an animal. You can use any medium to create this picture.
7. **3D Sculpture of a Flower or Plant-** use any medium to create a sculpture of some Flora. Think outside the box with this one, you could use toys, clay, junk- you name it!
8. **Henri Matisse Inspired Collage-** Henri Matisse used bold colours and shapes to create his works of art. Take inspiration from his style to create your own piece. Any medium is acceptable for this category.
9. **Make a Vehicle from Junk-** Use anything you have in your recycling box or lying around to create a model of any vehicle you choose.
10. **Pasta Collage-** use any pasta to create a collage or picture of anything you fancy. This could be fusilli fish or macaroni monsters; get creating.

## Early Key Stage 2 - Years 3 & 4

11. **Viking Ship-** use any medium to create a model of a Viking ship.
12. **Viking Fact File Poster-** create a detailed poster using facts about Vikings. This must be a maximum of A3 in size.
13. **William Morris inspired Wallpaper-** William Morris created beautiful floral pieces of art which lend themselves beautifully to textiles and wallpaper. Use this style to create a sample of water, a maximum size of A3.
14. **Greek Inspired Paper Plate** – Use the striking classic Greek Style to decorate a paper plate.
15. **Dinosaur Models-** Create a model of a dinosaur using clay, fimo clay, plasticine OR salt dough. This model can be painted or decorated



# Children's Show

## Late Key Stage 2 - years 5 & 6

16. **Watercolour artwork**- Create a water colour picture. This should be a maximum size of A3.
17. **Illustrated Poem about Rivers**- Create a beautiful piece of writing about a river and decorate the page with your finest illustration.
18. **Self Portrait** – Create a beautiful stylised self-portrait. This should be a maximum size of A3, any medium.
19. **Argument on Deforestation**- create a written argument on deforestation. This can be illustrated. This should be a maximum size of A3.
20. **Dried Flower Greetings Card**- Use dried flowers to create a beautiful greetings card. The card can be decorated with other mediums, but the flowers should be the focal point.

## 11+

21. **'Phases of the Moon' artwork**- Use any medium to create an piece of art based on the phases of the moon. This could be 3D or flat.
22. **Create a Bag from Recycled Materials**- Use scraps and recycled clothes or wool and yarn to create a bag. Remember to embellish and decorate your creation.
23. **Design a Board Game**- Create a board game of your own making. Remember to include a written set of rules. This should be a maximum size of 42cm x 42cm (by 42cm if you decide to make a 3D game)

## Under 18

24. **Hama Bead Coaster**- Use Hama Beads to create a decorative and inspired coaster. This could be any theme.
25. **Recycled Robots**- Use recycled materials to create a model of a robot.
26. **Creative Writing**- 'An Animals Tale'- create a piece of writing based on the theme 'An Animals Tale'. This could be a poem, short story or description. All submissions should be printed or hand-written.



**WANBOROUGH  
SHOW SOCIETY**

*"For Community & Local Heritage"*  
[www.wanboroughshow.org](http://www.wanboroughshow.org)

# THE RURAL BEAN

OFFERING HOT  
DRINKS, MILKSHAKES,  
FRESH HOMEMADE  
LEMONADE AND  
SEASONAL SPECIALS

FOLLOW US ON  
INSTAGRAM AND  
FACEBOOK  
@THERURALBEAN



A DELICIOUS  
RANGE OF  
HOMEMADE CAKES  
AND BAKES  
CATERING FOR ALL  
DIETARY NEEDS  
ALWAYS AVAILABLE

## WHERE TO FIND US

FOR WANBOROUGH  
SHOW COME AND  
SEE US BY THE  
ENTRANCE AND THE  
VINTAGE CARS

WANBOROUGH VILLAGE HALL  
MONDAY 10-4  
WEDNESDAY 10-4  
FRIDAY 10-4  
WANBOROUGH FARMERS MARKET  
CAKE STALL 3<sup>RD</sup> SATURDAY OF THE  
MONTH



**Back & Active  
Care**

**Matthew Brittain, Chiropractor**

**Visit:** [www.backandactivecare.co.uk](http://www.backandactivecare.co.uk)

**Email:** [Matthew@backandactivecare.co.uk](mailto:Matthew@backandactivecare.co.uk)

**Call:** 07480762885

Emoyeni, Kite Hill, Wanborough, Swindon, SN4 0DD



30/08/16

# Children's Show Entry Form - FREE ENTRY

Class No.	Exhibit Description

Name:

Age

Address:

Contact Number:

Class No.	Exhibit Description

Name:

Age

Address:

Contact Number:

**You can either Post entries to Beth to the following address:-**

28 Warneage Green, Wanborough

**Or E-mail to:** [bethanhoye@gmail.com](mailto:bethanhoye@gmail.com)

Any queries please contact - Beth Hoye 07716344996

**Deadline 8pm on Thursday 20th August 2026**

# Main Arena



## Paws for Thought - Dog Display

1pm

Paws for Thought Dog Display Team were formed in 1998 and is recognised as one of the top dog display teams within the UK.

The team of 10 to 12 dogs and handlers are ever more popular due to their professionalism and desire to entertain all family members whatever their age or group, they are only happy when they manage to get the audience cheering and clapping for the dogs. The display includes agility racing, flyball, ladder walking, tricks, obedience routines and the now famous back walking dogs. The display is performed to music accompanied by a commentary which is relaxed and entertaining in style

Main arena sponsored by:



## Black Eagles - Acrobatics

3pm & 4.15pm

A troupe of totally stunning acrobats from Tanzania, now based in the UK. Set to lively African music, the show progresses through a series of powerful and graceful acrobatic and dance routines with limbo fire and hoop jumping. A high impact, joyful show that will have people gasping in amazement.



**WANBOROUGH  
SHOW SOCIETY**

*"For Community & Local Heritage"*

[www.wanboroughshow.org](http://www.wanboroughshow.org)

# Main Arena

## Mighty Smith Show

2pm

Tug of War

4.45pm

Impressive feats of strength from one of the UK's Strongest Men



Adrian Smith, 5th in the World's Strongest Man and three times Winner of UK's Strongest Man Competition, presents a show geared for family fun with visual humour and audience participation. Tearing up catalogues, bending six inch nails in his teeth, walking on a bed of broken glass, holding a chair with a seated lady on it in his teeth, presenting a children's tug of war with prizes.



**WANBOROUGH  
SHOW SOCIETY**

[www.wanborough.org](http://www.wanborough.org)

Main arena sponsored by:



## Main Arena

### Razamatazz Children's Show 3pm



### Pan Delight Steel Band 12 noon



### Morris Dancers 2.30pm



## Beer Tent & Café

Relax and enjoy some refreshments in the Beer Tent & Café, while listening to Gilmore & Jaz.

There will be a bar serving alcoholic and soft drinks. In addition there will be a café selling tea, coffee and cake.

There will be plenty of seating in the marquee, where you can enjoy your refreshments while listening to some music played by Gilmore n' Jaz.



**WANBOROUGH  
SHOW SOCIETY**

*"For Community & Local Heritage"*  
[www.wanboroughshow.org](http://www.wanboroughshow.org)

# Show Day Entertainment

**FREE For All!!**

(age restrictions apply)

This year we have 3 inflatables to provide entertainment for all ages.

## Helter Skelter Inflatable Slide



Get ready for a world of excitement with our captivating 10ft Platform Helter Skelter Slide! This exhilarating creation combines the nostalgia of a traditional helter skelter with a modern twist, making it a great attraction for all ages.

Children can embark on a thrilling journey as they climb to the top before swooshing down the curved slide that replicates the timeless fun of a classic Helter Skelter.

## New for this year

### Fun Bouncy Castle

Only suitable for younger children.



**WANBOROUGH  
SHOW SOCIETY**

*"For Community & Local Heritage"*  
[www.wanboroughshow.org](http://www.wanboroughshow.org)

# Football Darts



Sponsored by:-



Back by popular demand

Using Velcro footballs come and see the total you can score by aiming the football at the dart board.

Great fun for all.

**FREE For All!**



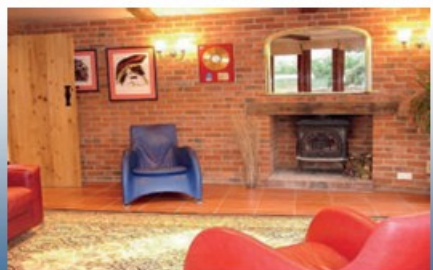
**Nationwide**  
PROPERTY LETTINGS

## Nationwide Property Lettings

Probably the most competitive fees of any experienced letting agent you will find (and we are from Wanborough).

In lettings, it's all about the detail - and we get it right!

Call us on 01793 513130 or visit us at:  
[www.nationwidepropertylettings.com](http://www.nationwidepropertylettings.com)



# Show Day Entertainment

## Climbing Wall

**FREE For All!!**

(age restrictions apply)



### Back for 2026 - Wanborough Show Climbing Wall

This year the Wanborough Show will have a 4 man, 7 metre, climbing wall which will be staffed by qualified guides throughout the day.

Come try it out!

Sponsored by:-



**WANBOROUGH  
SHOW SOCIETY**



# Daniel Cordell - Battery Chainsaw Carver



Sponsored by:-



As one of the most talented and experienced carvers in the UK, Daniel offers a professional display of his chainsaw carving and sculpting skills.

Auction at 5.30pm

One of Daniel's carved pieces will be auctioned at the end of the day in the beer tent

## Wild Science



Wild Science offers high-quality animal experiences featuring a diverse range of animals

There will be a variety of Mammals, Reptiles, Amphibians & Invertebrates for you to see and touch.

Come and visit and ask questions



*"For Community & Local Heritage"*  
[www.wanboroughshow.org](http://www.wanboroughshow.org)



# Classic Vehicle Display 2026

The vehicle display at the Wanborough Show has become one of the most popular attractions among the many displays on offer.

The idea was first conceived in 2013, when a small collection of vehicles known to exist within the village was brought together for display. These included classic cars, military vehicles, steam engines and agricultural machinery.

The very first show featured around 15 vehicles. Since then, the event has grown significantly and now regularly attracts more than 60 exhibits, limited only by the space available.

Over the years, a variety of car clubs have joined us, alongside vehicles owned by enthusiastic private collectors. In addition to the car clubs, we also welcome scooter and motorcycle groups.

The local farming community continues to support the event with displays of tractors and earth-moving equipment. We are also delighted to welcome vehicles from the Swindon Fire Brigade and local police service, which are always especially popular with younger visitors.

A selection of vehicles will take part in the parade ground display between 12.30pm and 1.00pm.

This year, we are hoping to welcome the Aston Martin Owners Club, who will be showcasing a fascinating selection of vehicles.

At 4pm, the motorcycle community will parade through the showground, followed by the Swindon Scooter Club.

If you have a vehicle you would like to display, please contact

**John Boston on 07774 771551**  
or

via email at

[bostonj2@btconnect.com](mailto:bostonj2@btconnect.com)





# Trade Stands

Enjoy wandering around and viewing the many trade stands we have this year. This is a taste of some of the wide variety of stands that we have at the show.

**GlamoRose Cakes**



**Moody Cow Shakes**



**Retired Greyhounds in need of a loving home**



**Netty Noo Crafty Crafts**



**Broadleaf Grain Free Dog Food**



**Patey's Page Turner**



**Willow and Moss Online**



**WANBOROUGH  
SHOW SOCIETY**

*"For Community & Local Heritage"*

[www.wanboroughshow.org](http://www.wanboroughshow.org)



Jacqui's Homemade Sweets

Swindon & District Bonsai



# LES SMITH HAULAGE LTD

Delivered With Experience



For all your storage, haulage and distribution needs throughout mainland UK, we are happy to undertake short or long term contracts and we are always interested in full return loads to the Swindon Area.

45+ Years Experience  
90% of our fleet are London compatible  
Same, Next Day & Economical Delivery Options



[www.lessmithhaulage.com](http://www.lessmithhaulage.com) | 01793 525789 | [tony@lessmithhaulage.com](mailto:tony@lessmithhaulage.com)

# Summer Raffle - 2026

## Raising funds for the Community & Local heritage.



Wanborough Show Society would like to thank those who have donated prizes to the 2026 raffle

### Raffle Prizes:-

- 1st - Mini break at Manorbier Country Park, Tenby
- 2nd - A Day out at the Bath Races
- 3rd - £100 Majestic Wine Voucher

### Other Prizes include:-

Meal vouchers for The Plough Inn, The Brewer's Arms, The Harrow Inn, The New Calley Arms and The Cross Keys.

Wyvern Theatre pair of tickets, Beer from Ramsbury Brewery and Hop Kettle.

### Plus many more great prizes

1st Prize donated by:



Raffle Supported by:



Tickets can be purchased from local pubs and at the Show on 22nd August, find us in front of the beer tent.

Raffle to be drawn at The New Calley Arms on Sunday 23rd August at 15.00



"For Community & Local Heritage"  
[www.wanboroughshow.org](http://www.wanboroughshow.org)

# Thank you to our Summer Raffle Donors

THE BREWERS ARMS  
WANBOROUGH

CROSS KEYS



THE  
NEW CALLEY  
ARMS



WYVERN THEATRE  
& ARTS CENTRE  
SWINDON



[www.wanboroughshow.org](http://www.wanboroughshow.org)

# Family Fun

# DOG SHOW

Sponsored by  
Abbey Dog  
Training



Dog Show entry £2.50 per class per dog.

Enter on the day

## Top-rated Puppy & Dog Trainers

### Based in Wiltshire

#### why choose ABBEY DOG TRAINING?

Our qualified, experienced trainers deliver group classes and 1:1 sessions for puppies, adolescent and adult dogs!

Our classes are deliberately small – never more than five dogs – so that you and your dog get the focus and attention you deserve from our professional trainers.

Book a **FREE** consultation call with a member of our expert team to discover the perfect training option for you and your dog.

**Alison Abbott**  
owner & head trainer



01793 626085  
07562 728622

team@abbeydogtraining.co.uk



[www.abbeydogtraining.co.uk](http://www.abbeydogtraining.co.uk)



**WANBOROUGH  
SHOW SOCIETY**

*"For Community & Local Heritage"*  
[www.wanboroughshow.org](http://www.wanboroughshow.org)

Abbey Dog Training



# Family Fun DOG SHOW

## SHOW SCHEDULE

**REGISTRATION**  
FROM 12:00PM

CLASSES BEGIN AT

**1:00PM**

ALL CLASSES ARE  
FAMILY-FRIENDLY.

**SHOW ENDS**  
**4:50PM**

1:00PM



**PUPPY CLASS (6-12 MONTHS)**  
For the cutest young stars of the future!

1:30PM



**BEST BITCH**  
Celebrating our fabulous female dogs.

2:00PM



**BEST DOG**  
Show us your handsome boys!

2:30PM



**BEST RESCUE**  
For dogs with a second chance  
and a special story.

3:00PM



**GOLDEN OLDIE (7 YEARS +)**  
Honouring our wonderful  
senior companions.

3:30PM



**JUNIOR HANDLER  
(HANDLER AGED 6-16 YEARS -  
ADULT TO BE PRESENT)**  
Young handlers showcase their  
skills and teamwork.

4:00PM



**BEST TRICK**  
Can your dog spin, roll over,  
dance or high five?  
Time to impress the crowd!

4:30PM



**30 SECOND CHALLENGE  
OPEN TO ALL!**  
How many times can your dog  
sit and lie down in 30 seconds?

THANK YOU FOR JOINING OUR  
*Family Fun Dog Show!*



# HOUSE

Sales, Lettings & Auctions



"As a resident of Wanborough myself, it gives me great pleasure to continue supporting the Wanborough Show and to give back to the community that supports me and my family"

**Ross Sutton**

07514 839415

[ross@thehouse-group.com](mailto:ross@thehouse-group.com)



Scan to view  
our properties

**Poplars Daycare**  
**Nursery & Pre-School**  
QUALITY CHILDCARE

♻️ AGES 3 MONTHS - 14 years

♻️ STRONG LOCAL LINKS

♻️ OFSTED RATED 'GOOD'

♻️ EXTENSIVE OUTDOOR GROUNDS

♻️ WELL LOCATED

♻️ FLEXIBLE HOURS



**LIMITED SPACES DUE TO HIGH DEMAND**

**CONTACT US TO ARRANGE A VISIT AND SECURE A SPACE FOR  
YOUR LITTLE ONE...**

WATBOROUGH ROAD | SWINDON | SN4 0AA

enquiries@poplars-nursery.co.uk | 01793 790774 | www.poplars-nursery.co.uk

# Public Notices

## First Aid

The First Aid facility is located by the Main Arena opposite the beer tent and all accidents should be reported there, as soon as possible.

## Lost Children

Lost children should be brought to the Commentary Tent at the side of the Main Arena

## Vehicles (Display and General)

Please be aware of moving vehicles at the entrances, in the car parks and especially when the Vehicle Parade enters the Main Arena.

## Dogs

Well-behaved dogs on leads are welcome on the Showground. Please be sure to clear up after your dog. Please do NOT leave your dog in your car

## Showground Safety

Please remember the Showground is an open field. The ground is not level – there may be rabbit holes, dips, bumps and ruts. We use traditional marquees, tents and gazebos so please look out for guy ropes and anchor pegs. Please take care when walking around.

Please follow any directions given by one of our stewards/marshals, who will be clearly identifiable in the Wanborough Show Society hi-viz vest.

Smoking is not permitted in any tent or marquee. Sand buckets are provided at each marquee entrance for safe disposal. If a fire is discovered raise the alarm and dial 999 (SN4 0DA)

## Behaviour Policy

Please remember that our organisers and volunteers work hard to make this event possible. Please treat them with kindness, patience, and respect so we can all enjoy a positive atmosphere. We do not tolerate any form of disrespectful behaviour. Anyone engaging in such behaviour will be asked to leave the event without refund.

## Complaints Policy

We realise that we can't always get everything right so if you wish to make a complaint or report any issue to us then please go to the Commentary Tent, next to the Main Arena, in the first instance and then you will be directed to the correct person to raise your issue.



**Continued main sponsor of the  
WANBOROUGH VILLAGE  
& COUNTRY SHOW**